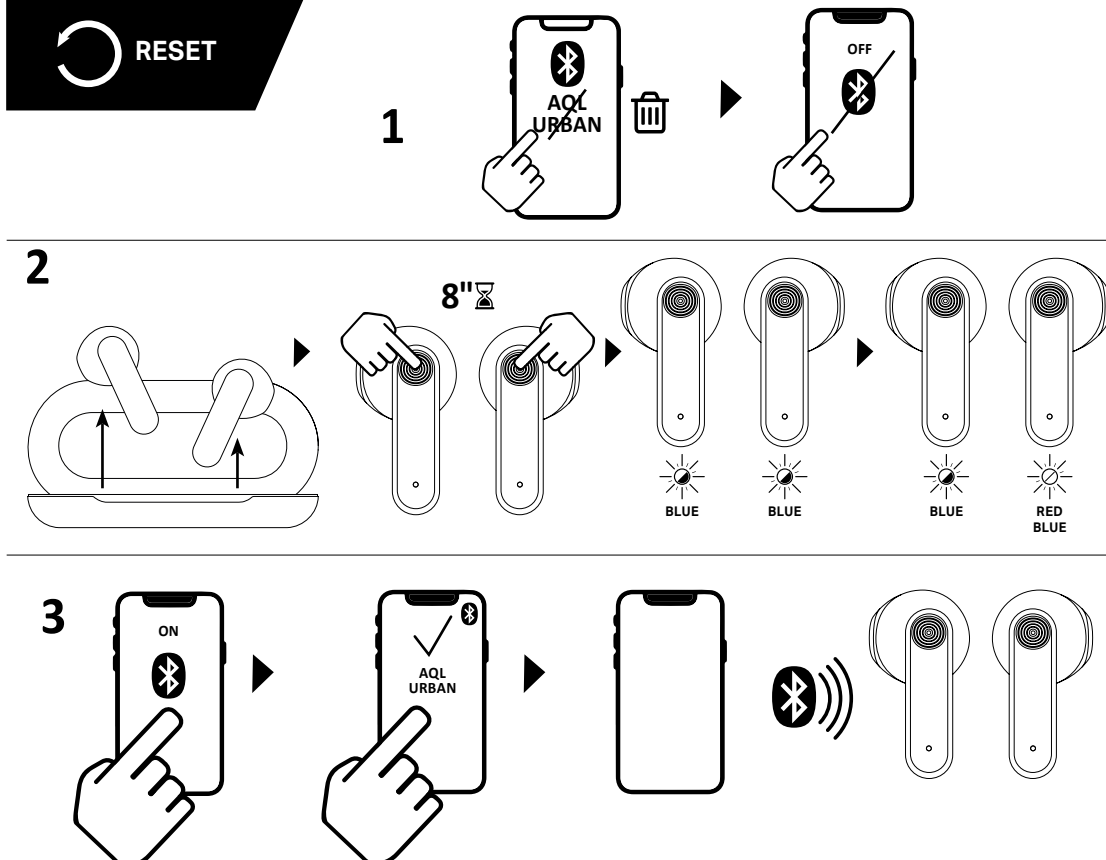
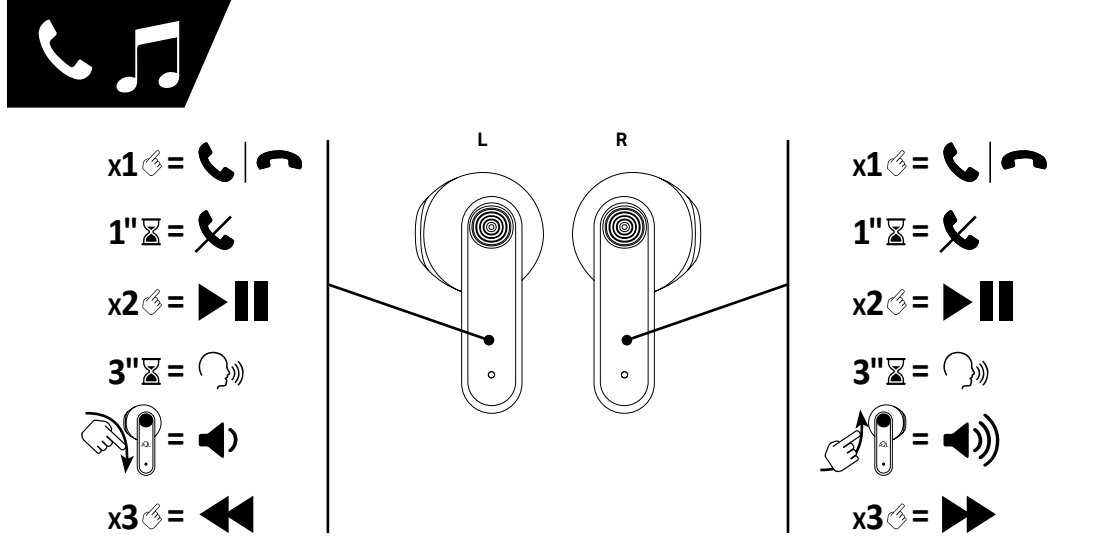
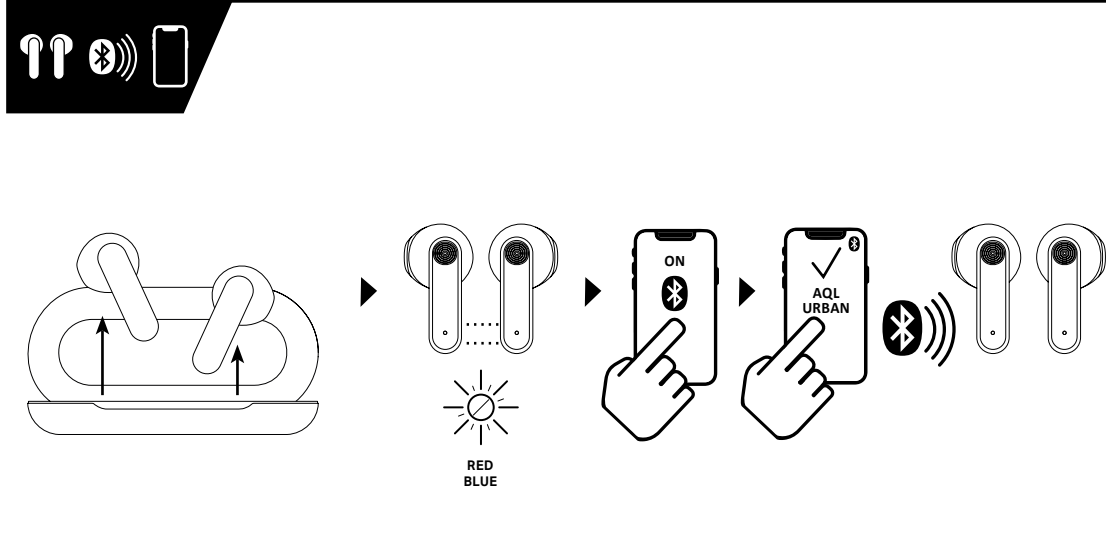
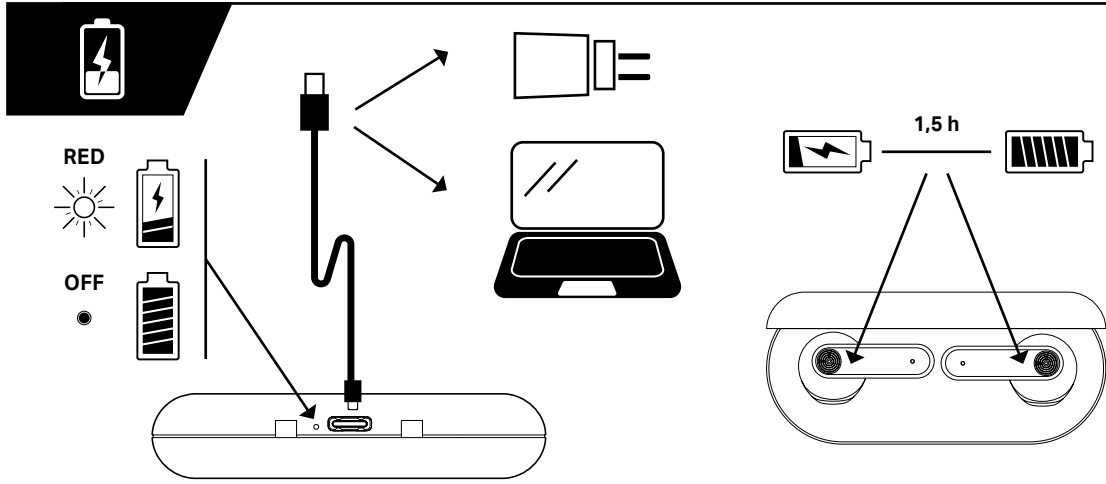




AUDIO QUALITY LAB

URBAN

ISTRIBUITURANTUS



| | |
|-----------|--|
| EN | Bluetooth® v5 Supported profiles: Headset – Handsfree – A2DP – AVRCP Range: 10m Bluetooth® Frequency Range: 2.402-2.480 GHz Battery voltage: 3.7V Battery capacity: 25 mAh x 2 Charging Case battery capacity: 300mAh USB-C port Voltage (V): 5V USB-C port current (A): 50mA ERP: 96dB Stand by Time: 120h Talk Time: about 4 hours Play Time: about 2 hours Earphones recharging: about 1.5 hours Charging case recharging: about 2 hours Weight: 45g |
|-----------|--|

| | |
|-----------|--|
| FR | Bluetooth® : version 5.0 Profils supportés : Écouteur – Mains libres – A2DP – AVRCP Portée : 10 m Gamme de fréquences Bluetooth® : 2.402 GHz - 2.480 GHz Tension de la batterie : 3,7V Capacité de la batterie : 25 mAh x 2 Capacité de la batterie du Charging Case : 300 mAh Voltage du port USB-C (V) : 5 V Courant du port USB-C (A) : 50mA ERP : 96dB Autonomie en stand-by : 120 heures Autonomie en conversation : 4 heures Autonomie en lecture : 2 heures Charge des écouteurs : 1,5 heure environ Charge du Charging Case : 2 heure environ Poids : 45g |
|-----------|--|

| | |
|-----------|--|
| ES | Bluetooth® : v5 Perfiles admitidos: Escuchaer – Mains libres – A2DP – AVRCP Alcance: 10 m Rango de frecuencia Bluetooth®: 2.402GHz-2.480 GHz Voltaje de la batería: 3.7 V Capacidad de la batería: 25 mAh x 2 Capacidad de la batería del Charging Case: 300 mAh Voltaje (V) del puerto USB-C: 5V Corriente (A) del puerto USB-C: 50mA ERP: 96dB Autonomía en modo de espera: 120 horas Tiempo de conversación: 4 horas Tiempo de reproducción: 2 horas Carga de los auriculares: 1,5 horas aprox. Carga del Charging Case: 2 h aprox. Peso: 45 g |
|-----------|--|

| | |
|-----------|--|
| IT | Bluetooth® v5.0 Profil supportati: Headset – Handsfree – A2DP – AVRCP Portata: 10mt Bluetooth Frequency Range: 2.402GHz-2.480GHz Battery Voltage: 3.7V Battery Capacity: 25mAh X 2 Charging Case battery capacity: 300mAh USB-C port Voltage (V): 5V USB-C port current (A): 50mA ERP: 96dB Stand by Time: 120h Talk Time: 4 ore circa Play Time: 2 ore circa Ricarica auricolari: 1,5 ore circa Ricarica Charging Case: 2h circa Peso: 45g |
|-----------|--|

| | |
|-----------|---|
| RU | Bluetooth® : v5 Поддерживаемые профили: Headset – Handsfree – A2DP – AVRCP Дальн. действие: 10м Частотный диапазон Bluetooth®: 2.402-2.480 ГГц Напряжение аккумуляторной батареи: 3.7В Емкость аккумуляторной батареи: 25mAh X 2 Емкость аккумуляторной батареи Charging Case: 300mAh Напряжение порта MicroUSB (В): 5В Сила тока порта USB-C (А): 50mA ERP: 96dB Время работы в режиме ожидания: 120 часов Время работы в режиме разговора: 2,5 часа Время воспроизведения: 2 часа Зарядка наушников: около 1,5 часа Зарядка Charging Case: около 2 часов Вес: 45 г |
|-----------|---|

| | |
|-----------|--|
| PT | Bluetooth® : v5 Perfis suportados: Headset – Handsfree – A2DP – AVRCP Alcance: 10 metros Faixa de frequência Bluetooth®: 2.402GHz-2.480GHz Tensão da bateria: 3.7V Capacidade da bateria: 25mAh X 2 Capacidade da bateria do Charging Case: 300mAh Tensão da porta USB-C (V): 5V Corrente da porta USB-C (A): 50mA ERP: 96dB Autonomia em stand-by: 120 horas Autonomia em conversação: 4 horas Autonomia em reprodução: 2 horas Recarga dos auriculares: cerca de 1,5 hora Recarga do Charging Case: cerca de 2 hora Peso: 45g |
|-----------|--|

| | |
|-----------|--|
| DA | Bluetooth® : v5 Understøttede profiler: Headset – Handsfree – A2DP – AVRCP Rekkevidde: 10 m Bluetooth® frekvensområde: 2.402GHz-2.480GHz Batterispænding: 3.7V Batterikapacitet: 25 mAh X 2 Batterikapacitet charging case: 300 mAh USB-C portens spænding (V): 5V USB-C portens strøm (A): 50mA ERP: 96 dB Standbytid: 120 timer Taletid: 4 timer Afspilningstid: 2 timer Opladning af headsettelefoner: cirka 1,5 time Opladning af Charging Case: cirka 2 time Vægt: 45g |
|-----------|--|

| | |
|-----------|---|
| SV | Bluetooth® : v5 Onderstøttede profiler: Headset – Handsfree – A2DP – AVRCP Beræke: 10 m Frekvensbereich Bluetooth®: 2.402GHz-2.480GHz Batterispænding: 3.7V Batterikapacitet: 25mAh X 2 Batterikapacitet opladningscase: 300mAh Spænding USB-C port (V): 5V Strømstyrke USB-C port (A): 50mA ERP: 96 dB Tidsduur in stand-by: 120 uur Tidsduur in gesprek: 4 uur Calma Süresi: 2 saat Kukak (i) kulaklıkların yeniden sarj edilmesi: Yaklaşık 1,5 saat Charging Case yeniden sarj edilmesi: Yaklaşık 2h Ağırlık: 45g |
|-----------|---|

| | |
|-----------|--|
| SL | Bluetooth® : v5 Podržani profili: Slušalice – handsfree – A2DP – AVRCP Dosež: 10 m Bluetooth® frekvenčni razpon: 2.402-2.480GHz Napetost baterije: 3.7V Zmogljivost baterije: 25mAh X 2 Zmogljivost baterije polnilega ohišja: 300mAh Napetost vhoda USB-C (V): 5V Tok vhoda USB-C (A): 50mA ERP: 96dB Čas pripravljenosti: približno 120 ur Čas pogovora: 4 ure Čas predvajanja: 2 ure Polnjenje slušalk: približno 1,5 ure Polnjenje polnilega ohišja: približno 2 h Teža: 45 g |
|-----------|--|

| | |
|-----------|--|
| EL | Bluetooth® : v5 Υποστηρίξιμοι προφίλ: Headset – Handsfree – A2DP – AVRCP Εμβέλεια: 10m Εύρος Συχνότητας Bluetooth®: 2.402GHz-2.480GHz Τάση Μπαταρίας: 3.7V Χωρητικότητα Μπαταρίας: 25mAh X 2 Χωρητικότητα μπαταρίας Charging Case: 300mAh Όψα USB-C Τάση (V): 5V Ρεύμα (A) Βύραξ USB-C: 50mA ERP: 96dB Χρόνος σε αναμονή: 120 ώρες Χρόνος ομιλίας: 4 ώρες Χρόνος Αποπαύσεως: 2 ώρες Φόρτιση ακουστικών: 1,5 ώρες περίπου Φόρτιση Charging Case: 2 ώρες περίπου Βάρος: 45g |
|-----------|--|

